

## **Historic, Archive Document**

Do not assume content reflects current scientific knowledge, policies, or practices.



6271

Recd in 1946  
File temp with 1946

LIBRARY  
RECEIVED  
★ JAN 25 1946 ★  
U S Department of Agriculture

# LILLIES

## *Autumn Planting*

### **1945**

#### **NOTICE—Please Read**

Many varieties are almost exhausted, PLEASE make second choice or check order sheet allowing us to substitute. **There is no time for correspondence** and we do not want to disappoint any one.

Send your order at once. We fill orders in rotation as received August 10, 1945.

## **ROMAINE B. WARE**

*Successor to* **JULIA E. CLARK**  
**CANBY, OREGON**

To my customers, and  
The customers of Mr. E. L. Kline, Lake Grove, Oregon  
Who have been my customers for the past three years, too:

This is my introduction to you of

Mrs. & Mr. Romaine B. Ware

who have purchased my ranch and the sale of the lilies.  
I deeply regret leaving you and the lilies, with whom  
I have been associated for almost twenty years; but I'm  
leaving you in excellent hands. Please be just as nice  
to them as you have been to me. Goodbye.



Sincerely yours,

(Miss) Julia E. Clark

Canby, Oregon, June, 1945.

To you who love fine lilies:

It is with considerable pride that Mrs. Ware and I assume serving the many customers of Miss Clark and Mr. Kline. Some of you have been depending upon them as a source of fine lilies for nearly two decades. We hope to continue supplying you with the best in lilies and other bulbs. These aristocrats of the garden demand painstaking care, not only in their growing but in packing and shipping as well. Mr. Kline has spent years in the growing of lilies and we will continue the same arrangement as Miss Clark, that is, Mr. Kline will furnish the bulbs and we will handle the office and shipping end of the business for both her customers and his. This avoids duplication of labor and will serve you best.

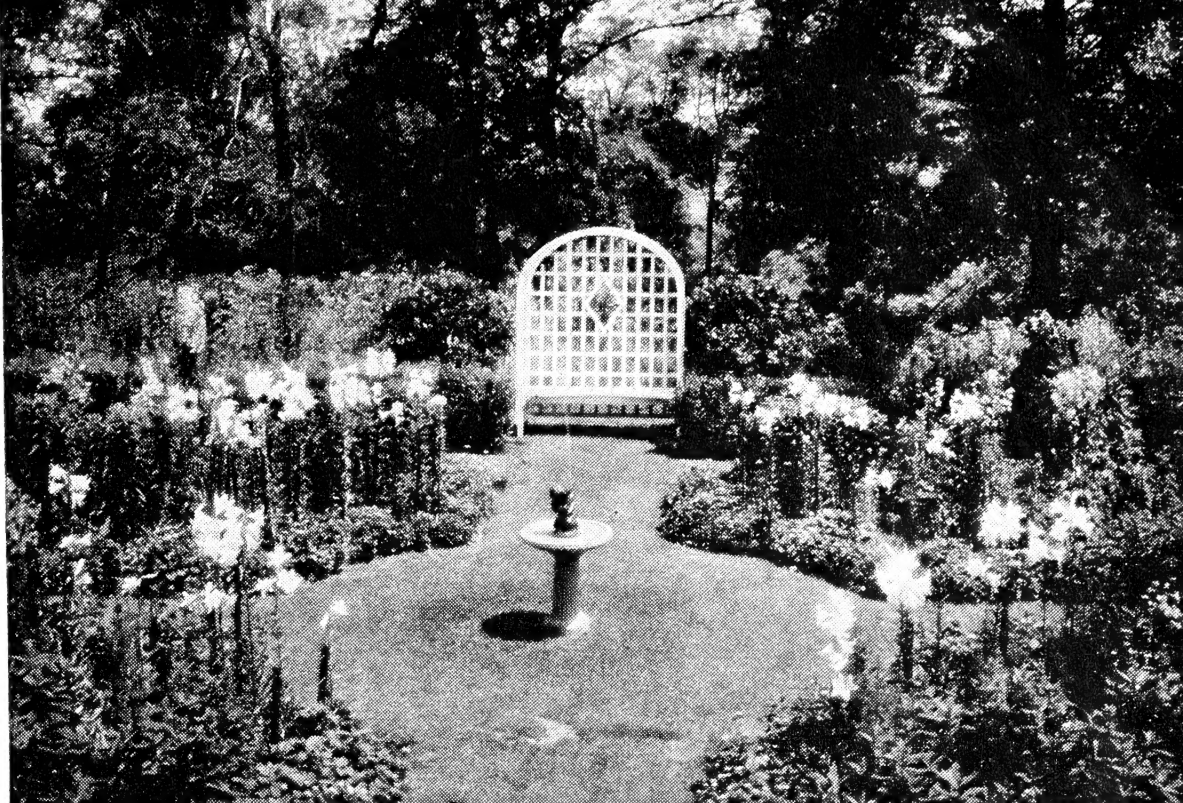
I feel that many of you know me already from having read some of the several hundred magazine articles it has been my privilege to write during the past twenty-five years. I have grown lilies in my own gardens for more than thirty years under almost every conceivable condition throughout the east, the middle west and the Pacific coast. They are worthy of your best efforts and will repay a hundred fold the care you give them.

With the wonderful lilies now available and the better understanding of their cultural requirements which we have today, lilies will play an even more prominent part in the garden pageant. We herewith pledge our best efforts to send you the finest lilies grown. Oregon produces them and we have them.

Yours for better gardens,

ROMAINE B. WARE.

... "Such gardens  
are not made by  
saying, 'Oh, How  
Beautiful' and sit-  
ting in the shade."  
—Kipling.



## *Achievement!*

Success with Lilies is unquestionably the proudest achievement of the amateur gardener. Lilies have a lure and charm about them seldom held by other flowers. Few others approach them for sheer exotic beauty. None add so much to the distinctiveness of one's garden. They may not be the easiest flowers to grow but the better understanding of their likes and dislikes that has developed during the past two decades makes them a "must", more than worthy of your very best efforts.

Lilies are among the gardeners' finest mediums for "planting" garden pictures. They are at once a challenge and a stimulation to skill and originality. With them you can create a display of continuing beauty from early summer until late fall. With them you splash color in glorious masses but also in exquisite detail. Lilies blend into your picture as do few other plants.

Nor should you forget the "Little Cousins of the Lilies", the minor bulbs that make spring in the garden a real achievement. There are so many bulbs in such a variety of types and colors that here again your garden planting offers a glorious opportunity. And best of all, the great majority of the bulbs are long lived. Once you get them in your garden, they become an ever increasing supply of planting material. Year by year you can plant and re-plant till your picture approaches true perfection. If you are like I am, it will never satisfy you but that is all the more inspiration to keep on. Never have I seen the garden that could not be improved in some detail. This is one of the things that makes gardening worth while.

With the quality and variety of bulbs we grow here in Oregon, I feel that you will find the material you want to perfect your garden picture. Never have I found better anywhere. These bulbs come from the far corners of the world and the wonderful climate of this valley grows them even better than their native haunts. Whether you are a collector of rare items or merely a flower lover who likes good things, you will find them here.

Our little catalog this year is but a modest offering. Restrictions prevent any more, but the quality of the bulbs will be as good as if they were all illustrated in color. Our sincere effort is to send you only the best.

# Hardy Lilies FOR YOUR GARDEN

We pay the transportation on all orders of \$5.00 or more in the United States. For orders less than \$5.00, kindly add 50 cents. Otherwise your order will be sent postage collect. Please do not send any orders for less than \$2.00. Seeds an exception to the above. All seeds sent postpaid. Kindly send cash with your order. We do not send bulbs C.O.D.

## QUANTITY PRICES

All bulbs are priced by the single bulb. Three bulbs are three times the price of one. On page seven there is a schedule of prices for lots of 6, 12, 25 and 100 bulbs. Flowering size bulbs should, under normal conditions, bloom the first season. All bulbs sold are flowering size or larger.

**AMABILE** -125 - An early blooming, waxy, bright orange-scarlet lily for the rock garden or the border. Height 1 to 2 ft. Early June. Each 35c

**AMABILE Luteum**-126-A rare form of this lily. Clear orange-yellow, reflexed. Each 80c.

## AURATUM or Gold-Banded Lily

All our Auratums are grown from seed and are free from disease. You may plant them freely and look forward to their glorious display of bloom. They dislike limestone soils and love full sunshine. Aug.-Sept. Shipped November.

**AURATUM** (The Usual Gold Banded Lily)-130-A large white bowl-shaped lily with central band of gold. Each \$1.15.  
6 to 7, Each \$1.35; Large, \$1.55.

**AURATUM** (Extra Selected Stock)-135-Superior in size, form and color. Each \$2.60.

**AURATUM Pictum**-136-Large white blooms with many crimson spots and the tip of the gold band crimson flushed. Each \$5.00.

**AURATUM RUBRO VITTATUM**-138-White with broad crimson band through each segment and numerous crimson spots. A lovely sort and greatly in demand. Each \$5.75.

**AURATUM Platyphyllum**-139 - A larger bloom, white with crimson spots and a central band of gold through each petal. Each \$1.65.

**AURATUM White Gold**-137 - A glorious white with a gold band and a few gold spots. Each \$4.75.

**AURATUM Esperanza Strain**-A named selection of seedlings in new forms. They are very wonderful - some of them 11 inches across. We can offer only two to five bulbs in each selection. Prices range from \$5.00 each up to \$100.00. With the advent of this glorious new strain, the Auratums again take their rightful place as leaders in the field of fine lilies. Ask for booklet if interested.

**AZALEA**-160-A rare new hybrid of Philadelphicum and Dauricum, blooming early with large clusters of apricot colored cup-shaped flowers. Likes sun. 2 to 2½ ft. Each 95c.

**MRS. R. O. BACKHOUSE**-170-A very strong-growing hybrid of Martagon X Hansonii producing stems with 20 to 30 flowers. Orange-yellow lightly spotted purple, the outside suffused with pale lavender. June-July. Stock limited. Each \$3.15.

**BACKHOUSE HYBRID SEEDLINGS**-171-A group of hybrids similar to Sceptre, Sutton Court, Brocade and others. Most of them are of the orange-yellow-buff tone and they are vigorous and hardy. They are a worth-while addition to any collection. Each \$1.65; Six for \$9.60.

**BRENDA WATTS** -180 - An especially vigorous hybrid with showy fire-red blooms dotted purple towards the center. 4 to 5 ft. July. Limited. Each \$1.05.

**BELLINGHAM HYBRID SEEDLINGS**-177 -A fine race of hybrid seedling lilies produced through the efforts of my old friend, the late Dr. David Griffiths, one of the world's great lily experts. Like all seedling hybrids, these vary somewhat, but are an excellent strain and a real value at these prices. Colors from light orange-yellow to rich orange-red. Easy culture, partial shade. 4-6 size. Six for \$2.10; 35c Each.

**BOLANDERI** -185 - Small bell-shaped flowers varying from brick red to rich wine red. Partial shade. A of M, RHS. Each \$1.05.

**BROCADE**-182-A very vigorous hybrid of the Backhouse strain with numerous large fragrant orange-yellow blooms profusely spotted chocolate. A graceful recurring blossom making a striking effect in the garden. June-July. Each \$4.15.

**CALLOSUM** -190 - This dainty lily has a slender wiry stalk with numerous recurved blossoms in a light shade of salmon. A gem in any garden. July-Aug. Full sun. Endures lime. Each 30c.

**CANADENSE**-191-One of the best loved northeastern American lilies. Tall graceful, easy to grow. Should be in the garden of every lily lover. Var. flavum - 191 - Clear golden yellow, chocolate spotted. Each 30c.

**CANADENSE rubrum**-192-Dark brick-red. yellow throat, spotted. Scarce. Each 45c.

**CANDIDUM-195**—Miss Clark loved it in her grandmother's garden and I well remember it as my grandmother grew it. This, the Madonna Lily of antiquity, is pure white, dainty and fragrant, a "must" for every garden. Plant **EARLY** as it must make fall growth. Remove the fall grown leaves in the spring and discourage damage by brown leaf spot. We never have enough of these bulbs so get your order in early. Shipped in August.

6-7 In. Cir. Each 45c.

7- 8 Each 55c.

8- 9 Each 70c.

9-10 Each 85c.

**CANDIDUM Salonikae Var-205**—Would you like to extend your season of bloom of the lovely Madonna Lilies? This new one opens about a week earlier than the usual and is, withal, a distinct addition to our gardens. We are most happy to offer it. Group both varieties together with your Pacific Giant Hybrid Delphiniums (see our seed offer) and enjoy a real garden picture. Each \$1.25.

**CENTIFOLIUM-210**—A magnificent species from China discovered by Reginald Farrer in an old garden. Immense white trumpets freely produced on stems up to 8 feet tall. These Oregon grown bulbs of this fine lily will be an exceptional addition to your garden. Give them a partially shaded location. July-August. Flowering size. Each 85c.

#### CENTIFOLIUM HYBRIDS—212

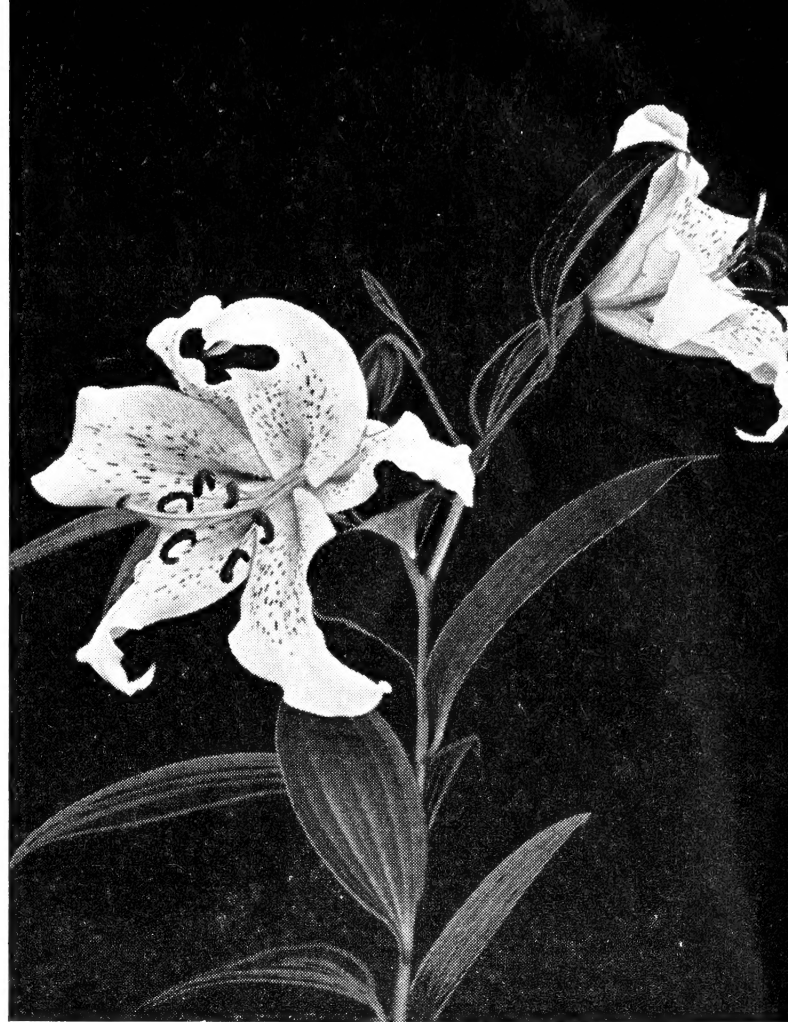
These gorgeous hybrids are from a *Lilium Leucanthum-Sargentae-Regale* cross and worthy of a place in any garden. Huge white trumpets with outside tinted from green to pink and brownish purple. They are very hardy and vigorous, 6-8 feet tall with lovely foliage. Simple culture, sun or partial shade. Bloom July-August after the Regals are past. We are extremely fortunate to be able to offer these at attractive prices. Each 55c, Dozen \$5.90.

**CHALCEDONICUM - 215**—A beautiful lily from Greece commonly known as the Scarlet Martagon. The slender stems, 3 to 4 feet tall, carry five to eight waxy scarlet turks-cap blooms, one of the most brilliantly colored of all lilies. July. Stock limited. Each \$3.15.

**CERNUUM-218**—A most attractive little lily, rosy lilac spotted wine purple and delightfully fragrant. Very similar to our lovely *L. Tenuifolium* in form and as easy to grow. Fine for either sun or shade in the rock garden or front of your border. Each 45c.

**COLUMBIANUM Ingrami-220**—A robust native from our west coast—many small golden yellow reflexed blossoms—nursery grown. Each 55c.

**CONCOLOR-222**—Another gem for the rock garden or front of the border only 12 to 18 inches high. To quote Miss Clark, "I always think of it as the star lily and love its glossy brilliant scarlet blooms." Its upright habit is especially valuable. Limited. Each 35c.



**AURATUM—The Gold-Banded Lily**

**CORONATION-226**—A new hybrid by Miss Isabella Preston. Beautiful recurved flowers of bright clear yellow. 3-4 feet. Sun or partial shade. Stock limited. Each \$3.15.

**CORDATUM-224**—A white lily for woodland planting. Cool moist situations. Each 65c.

**CROCEUM-228**—The "Cottage Garden Lily" and well named because it is so easy to grow. Many pure orange colored blossoms held upright. Our stock is the true form and supply limited. Each \$1.05.

**CROW'S HYBRID SEEDLINGS - 230**—Selected seedlings, *L. Sulphurgale* x *L. Princeps*, a magnificent lot of trumpet lilies. White blooms with colored exteriors. Established bulbs carry up to 30 blooms. Each 65c; Large, \$1.05; Extra, \$1.65.

**DALHANSONII - 250**—An outstanding lily with thick petaled recurved flowers in deep mahogany red; an exceptional color in lilies. Partial shade. 4 to 5 feet. June. Each \$3.15.

**DAVIDI-252**—Another lily from China where my old friend, E. H. Wilson, collected its seeds and bulbs. Cinnabar-red in color and in type similar to *L. Willmottiae*. Likes sun and good soil. Each 30c; Large, 40c.

**DAVIDI Macranthum-256**—Larger flowered, more robust and more floriferous than type. Brilliant orange-red. Each 35c; Large, 55c.

**DAVIDI Oriole - 260**—A new break in this strain with golden-orange flowers developed by Miss Preston in Canada. Scarce. Each \$1.85.

**DAVMOTTIAE-262**—A fine new hybrid of *Davidi* and *L. Willmottiae*, strong grower, cinnabar-red, reflexed. Easy culture. Each 35c; Large, 55c.

**SEE PAGE SEVEN FOR QUANTITY PRICES**

## Romaine B. Ware—Lilies

**DAURICUM (Type)-268-A** useful lily because it is early, June, and easy to grow. In cultivation over 200 years. Light to deep orange. **Each 30c.**

**DAURICUM Improved - 270 -** More vigorous and free blooming. **Each 35c.**

**DAURICUM Wilsonii - 272 -** Deep apricot, spotted mahogany, later blooming. **Each 35c.**

**DAURICUM Wadai-274-Early June,** large upright light apricot heavily spotted mahogany. **Each 35c.**

**DOUGLAS INGRAM-278-Another of the Dr. David Griffiths hybrids from Bellingham, Wash.** The blooms are Martagon in shape, orange-red with deep red tips and boldly spotted black. All together a good lily. **Each 65c. Large, \$1.05.**

**DUCHARTREI var. Farreri-282-A** nodding white bloom profusely spotted wine-purple and quite fragrant. Sometimes called the marble Martagon. This lily forms large colonies from underground bulblets. It has found favor in England but is little known over here. We have a limited stock of Oregon grown bulbs. **Each \$2.15.**

**EDNA KEAN-290-One of the Grace Marshall-Lilliam Cummings group of new hybrid lilies.** Very deep red with up to 30 blossoms to a plant. Sun or partial shade. **Each \$1.05.**

**ELEGANS, Red Improved-296-Large upright cup-shaped blooms,** two to four on a stem. Good in the border or rock garden. Easy in pots. This one is terra-cotta red. **Each 35c.**

**ELEGANS, Alice Wilson-298-Clear lemon-yellow,** with black spots. One of the best Elegans and rather scarce. **Each 45c.**

**ELEGANS, Mixed-300-Yellow through apricot to deepest red.** **Each 30c, 12, \$3.10.**

**FIRE KING-310-One of the most brilliant new hybrids.** Large fiery red recurved flowers held horizontally from sturdy stems. 3 to 4 feet tall. Late June. Mature bulbs carry as many as 30 flowers of exceptional substance and keeping qualities. **Each \$3.25.**

### *Lilium Formosanum*

#### Syn. Philippinense

A very lovely trumpet lily becoming more popular every year. It is slender, dainty, graceful and fragrant. Likes a warm sunny spot, free of lime. Bulbs are small for the size of the lily.

**FORMOSANUM. Late Variety-316-True** a giant lily, 7 to 8 feet tall with huge white trumpets as many as ten to a stem. It is late, September-October.

Flowering size bulbs 35c

Medium bulks..... 40c

Large ..... 50c

**THIS LILY IS FINE FOR GREENHOUSE FORCING**

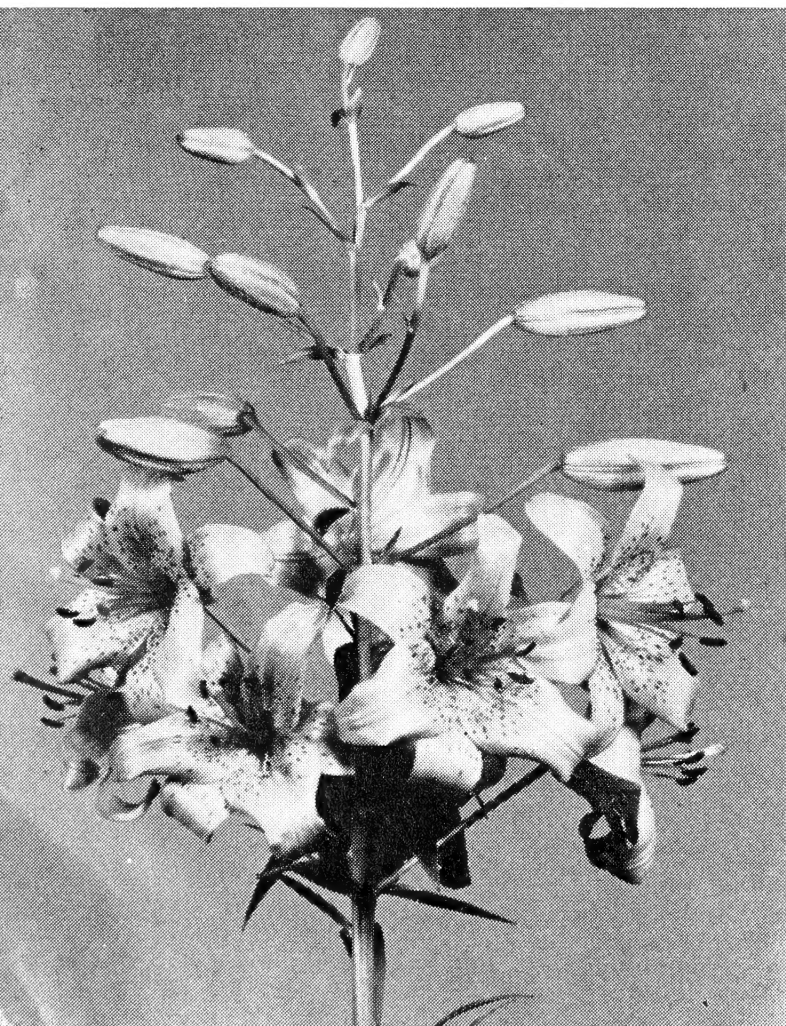
**FORMOSANUM, Intermediate - 320 -** Not as tall as the late form and blooms late in August. You will thoroughly enjoy its perfection. **Each 30c. Medium, 35c. Large 45c.**

**FORMOSANUM, Early-330-This is a dwarf form rarely more than a foot tall.** Lovely for the rock garden or front of the border if not too dry and windy. July-August. Hardy. **Each 35c. Medium, 40c. Large 45c.**

**GIGANTEUM HIMALAICUM - 350 -** Truly a giant 10 to 12 feet tall with broad dense foliage. Numerous tubular flowers, pure white, tinged purple inside. Loves rich humus of woodlands and plenty of shade, away from direct sun. Not suited to the open border. After flowering this lily perpetuates itself by offsets that should be lifted and replanted. It is sometimes two or three years after planting till it blooms but well worth the waiting. Plant shallow, barely covering. Limited stock. **Each \$1.45. Large \$2.75.**

**GRACE MARSHALL-356-A hybrid of Willmottiae but holding its bloom more horizontally to the stem.** Many blooms. Sun or partial shade. **Each \$1.15.**

**FIRE KING**





**GRAYI-360**—A native from the South Central States. Funnel shaped orange-red blossoms densely spotted with brownish-purple. Oregon grown. (We sell no collected stocks.)  
Each 45c.

**GUINEA GOLD-366**—A *Hansonii* Martagon hybrid with attractive yellow recurved flowers thickly spotted brown. Easy culture, partial shade.  
Each \$3.50.

**GLOW-370**—Another fine hybrid with cup-shaped flowers of a deep glowing reddish orange. Likes full sun. Valuable for early bloom.  
Each \$1.00.

**HANSONII-380**—Here's one lily you will grow enthusiastic over. It's very hardy, almost disease-proof, succeeds everywhere though it loves leaf-mold and it is long lived. You'll cherish its thick petaled nodding flowers. Stock is limited so order early.  
Each 85c.

*Lilium Henryi*  
**The Golden Speciosum**

**HENRYI-386**—Another indispensable lily, a lovely soft golden yellow with a tinge of light green through the center. Excellent for bouquets as every bud opens in water. Tall, 5 to 9 feet. We never have enough of this lily so order early.

5 to 7 Inch, 40c.

7-9, Each 60c.

9-10 and up, 80c.

**HURRICANE-402**—A new hybrid. Vase shaped upright bloom of Nopal red with a few dark spots. Lovely.  
Each \$3.30.

**HUMBOLDTII Magnificum-398**—If you have the right setting, here's a lily you will enjoy. The stem bears numerous flowers of a rich golden orange, with maroon dots, each circled crimson. It loves moist land in a fringe of woodlands, amongst low shrubs with the sun just peeping through. 4 to 6 feet. July. Supply limited.  
Each \$1.05.

**KELLOGGII-406**—A pinkish purple with maroon spots and a yellow stripe through the center of each petal. Very much reflexed. Fragrant. Doesn't that sound intriguing? Culture the same as *Humboldtii*. June-July. 2 to 3 feet.  
Each \$1.05.

**LILLIAN CUMMINGS-420**—Another of Miss Isabella Preston's hybrids sure to become a favorite when better known. Grenadine-red with small dark brown spots. Vigorous, bold and floriferous. We have a good stock available.  
Each \$1.05.

**LYLA McCANN-470**—A sister hybrid to *Lillian Cummings* and equally good. Orange, slightly spotted. This group are all fine garden lilies. Sun or partial shade.  
Each \$1.05.

**QUANTITY PRICES**

Here are the prices for six, twelve, twenty-five and one hundred bulbs according to the **EACH** price for all varieties. To learn the dozen or hundred price for any variety, look at the **EACH** price in this table and with it you have quantity prices. For example, **TEUNIFOLIUM** at **EACH** 15c is six for 80c, twelve \$1.40, twenty-five \$2.60 and \$9.40 per hundred. **BRENDA WATTS** at \$1.05 **EACH** is \$6.00 for six, \$11.70 for twelve and so on.

Each	6	12	25	100
\$ .15	\$ .80	\$ 1.40	\$ 2.60	\$ 9.40
.20	1.15	2.10	4.00	15.00
.25	1.40	2.60	5.00	19.00
.30	1.70	3.10	5.80	22.00
.35	2.00	3.70	7.00	26.80
.40	2.30	4.30	8.20	31.60
.45	2.50	4.70	9.00	34.80
.50	2.80	5.30	10.20	39.60
.55	3.10	5.90	11.40	44.40
.60	3.40	6.90	12.60	49.20
.65	3.70	7.40	13.80	54.00
.70	4.00	7.90	15.00	59.30
.75	4.30	8.30	16.20	63.60
.80	4.60	8.85	17.30	68.40
.85	4.85	9.40	18.40	72.80
.90	5.15	10.00	19.60	77.20
.95	5.45	10.60	20.80	82.00
1.05	6.00	11.70	23.00	90.80
1.10	6.30	12.30	24.20	....
1.15	6.90	12.90	25.40	....
1.25	7.25	14.20	28.00	....
1.35	7.80	15.30	30.20	....
1.45	8.40	16.50	32.60	....
1.55	9.00	17.70	35.00	....
1.65	9.60	18.90	37.40	....
1.75	10.20	20.10	....	....
1.85	10.80	21.30	....	....
2.05	12.00	23.70	....	....
2.15	12.75	Write for quantity prices		
2.25	13.35	on the more costly lilies.		

**MARHAN Ellen Willmott-490**—An exceedingly fine hybrid of Martagon x *Hansonii*, vigorous and reliable. Buttercup yellow, shaded light brown with mahogany spots. We seldom have enough.  
Each \$3.25.

**MARHAN H. J. Elwes-496**—A rare form of this hybrid with large saffron yellow flowers suffused with light saturn red on the exterior mahogany shading and spots.  
Each \$4.35.

*Romaine B. Ware—Lilies*

## Romaine B. Ware—Lilies

**MARTAGON-506**—This is the purple Martagon—easy culture in either sun or shade but sometimes takes a year to establish itself. Waxy light purple flowers, spotted with deep purple. 3-4 feet. June-July. Limited.

Each \$1.10.

### *Lilium Martagon*

**MARTAGON Album-510**—A dainty little white turkscap lily, considered to be the best of the Martagons and altogether lovely. Slow growing. We never have enough.

Each \$1.25.

**MARTAGON Cattaniae-516**—A very dark flowered, almost black lily, growing vigorously. Rare and striking when established.

Each \$3.25.

**MAXIMOWICZII Wadai-530**—A very brilliant, easily cultivated lily with thick petaled flowers in deep orange-red spotted mahogany.

Each, 35c.

**MAXIMOWICZII Wadai (late variety)-536**—Same as above but blooms later, September.

Each 35c.

**MAXWILL-540**—Among the best of the more recent hybrid lilies. Similar to Willmottiae but a stiffer stem. Light orange-yellow with little black dots. Strong constitution and easily established.

Each 40c.

Large, 60c.

**MEDEOLOIDES-546**—The Wheel Lily, lovely for rock gardens. Apricot to scarlet with black dots, nodding. Height 12 to 18 inches. July. Sharp drainage, abundance of leaf mold. Well worth coddling.

Each 65c.

**MICHAUXII (Carolinianum)-550**—Swamp lily of southeastern states. Fragrant, reflexed bright orange-red with purple spots and white throat. Likes moist but well drained lime-free soil. Blooms July-August. Partial to full shade.

Each 65c.

**MICHIGANENSE-556**—A mid-western native. Very brilliant red, profusely spotted purplish brown, reflexed. 2 to 5 feet tall.

Each \$1.05.

**MISQUITO-560**—A new hybrid by Miss Preston of the Ottawa Experimental Farm. A reflex flower similar to Davidi but of a very pleasing red tone. Limited.

Each \$1.75.

**NEPALENSE-570**—A rare Himalayan lily, greenish-yellow with throat heavily stained dark purple. Funnel shape with broad foliage. A tender variety, greenhouse only where the ground freezes heavily. Fine in the garden down south. Limited.

Each \$2.25.

**OCCIDENTALE-580**—A very rare lily from the northern coastal area of California. Small bell-shaped, pendulous flowers, orange-red, maroon spotted throat. Not too difficult in lime-free soil with plenty of peat.

Each 95c.

L. MARTAGON  
VAR. CATTANIAE

## *Lilium Longiflorum*

for GARDEN and GREENHOUSE

Easter Lilies are among our best loved flowers and with the advent of these new ones produced by the famous Dr. David Griffiths, you can have them to perfection. Here in Oregon they are grown outside but where frosts are heavy, the greenhouse is necessary. In the south you can plant outside.

**LONGIFLORUM "Croft"-430**—A very large Easter lily, originally propagated only in southern Oregon. Longer and stronger stems with more flowers than any other strain. Size and substance of Croft blooms together with ease of culture have made them world famous.

Large, Each \$1.75.

**LONGIFLORUM "Estate Lily"-440**—This like the Croft is a huge lily, blooms fully 50% larger than ordinary Easter lilies. It is a truly beautiful DISPLAY LILY either in the southern garden or in your greenhouse. Huge demand and a scarcity of bulbs has kept this wonderful lily up in price. Try a few of these two lilies to force for Easter. Estate is priced.

Large, Each \$1.70.

Extra large, Each \$1.85.

**LONGIFLORUM Snow Drift-450**—A recently introduced strain from Australia with large flowers and high quality.

Each 65c.

**LONGIFLORUM Easter Early-460**—This is a hybrid with Formosanum and is valuable for forcing as it is especially early. May be grown outside in mild climates. For cutting it is excellent. Stocks are limited.

Each 85c.

Other lilies responding well to greenhouse forcing include:

ELEGANS                      UMBELLATUM  
TENUIFOLIUM                FORMOSANUM  
and the HAVEMEYER HYBRIDS



# Please Note

At this time there is every indication that our stock for this season will equal last year's BUT we had to disappoint quite a few customers last season so I'm repeating what Miss Clark said last time—"Many varieties are entirely sold out—we have a very limited supply of others—and still other varieties in small sizes only. It takes years to grow lilies. **PLEASE PLACE YOUR ORDER EARLY.**" We file orders as received and ship accordingly.

## OREGON IS NO FARTHER THAN YOUR MAIL BOX

Please read this before ordering. We hope it will save much correspondence during these busy days. Too, that it may avoid misunderstandings.

### When to Order

Send your orders as early as possible. Stocks of many bulbs are short. Orders are filed in rotation as received and shipped accordingly. All bulbs are shipped in the fall as soon as dug. Sometimes an order must be sent in two or more shipments according to the digging season for different varieties.

### We Pay the Postage

On all orders of \$5.00 or more within the U. S. we pay the postage. No charge for packing. For orders less than \$5.00, kindly add 50c, otherwise your order will be sent postage collect.

### Small Orders

Due to the high cost of handling, please do not send orders for less than \$2.00. Seeds are an exception to the above. All seeds sent postpaid.

### Remittances

Your remittances and order will be acknowledged when received. Money orders, checks or bank drafts may be used. Currency at your own risk. No C.O.D. shipments. We sell retail only.

### Guarantee

We guarantee all bulbs and plants to be in first class condition when sent and to reach you safe and undamaged. Replacement is guaranteed upon any bulbs or plants received in damaged condition. Of course, you would not expect us to replace stock lost due to bad drainage, drought, carelessness, neglect or lack of experience on your part. These conditions are beyond our control and we assume no responsibility. No complaints can be considered more than thirty days after shipment.

**Please Print or Write Your Orders Plainly — Print Name and Address ALWAYS.**

**Use Separate Sheet of Paper for Correspondence.**

*Romaine B. Ware-Lilies*

# Lily Selections for the GARDEN BEAUTIFUL

These selections are carefully made with due regard to color, season of bloom and desirability. You will find them most satisfying. Bulbs and plants wrapped separately and labeled. No changes or substitutions can be made in these selections.

## SELECTION No. 1 — Lilies for the Connoisseur

This Selection contains many of the finest new and rare hybrids introduced in recent years. If you want a half dozen lilies you will not see in every garden here you have them and at a distinct saving.

1 CORONATION	1 FIRE KING	1 PETER PUGET
1 DALHANSONII	1 MARHAN ELLEN WILLMOT	1 PRIDE OF CHARLOTTE

One each of the above six varieties, each carefully labeled.  
6 BULBS FOR \$15.00.

## SELECTION No. 3—Ten Fine Lilies Modern Varieties for Any Garden

1 Amabile luteum	1 Preston's Hybrid Seedlings
1 Canadense rubrum	1 Scottiae, Dark Form
1 Crow's Hybrid Seedlings	1 Shuksan
1 Davidi	1 Umbellatum
1 Lillian Cummings	1 Incomparable Willmottiae Unicolor

One Each of the Above Ten Varieties  
Each Labeled.

This selection offers a good range of color  
and type of flower.  
10 VARIETIES \$5.00

## SELECTION No. 2—Seven Varieties Selected for the Novice

2 CANADENSE FLAVUM	2 REGALE 2 SUNSET
2 CONCOLOR	2 SUPERBUM
2 SHUKSAN	2 TENUIFOLIUM

2 Each of 7 Varieties, Each Labeled.

14 BULBS FOR \$3.00

2 LOTS, 28 BULBS, \$5.80

(On orders less than \$5.00, kindly add  
50c, for packing and postage)

## SELECTION No. 4 — Nine Choice Varieties

Varieties with a wide range of color, type and season of bloom.  
Outstandingly beautiful.

1 MRS. R. O. BACK- HOUSE	1 LONGIFLORUM "ESTATE"	1 GLOW
1 CENTIFOLIUM HYBRIDS	1 PHYLLIS COX	1 SCOTTIAE DARK FORM
1 DOUGLAS INGRAM	1 PRINCEPS CREELMAN SEEDLINGS	1 T. A. HAVEMEYER SEEDLING

One each of nine varieties, each one carefully labeled, \$10.00

## SELECTION No. 5—Hemerocallis

Five of the Finest Varieties, All Labeled

BAGDAD	HYPERION
FLUVA ROSEA	SONNY
RAJAH	

ONE OF EACH OF THE ABOVE FOR  
\$5.00

## SELECTION No. 6—Specie Tulips

Eight Varieties, Our Selection, All  
Labeled, THREE OF EACH VARIETY,  
24 BULBS IN ALL, FOR \$5.00

These are a real buy and you will be  
delighted with the spring picture they  
make.

## SELECTION No. 7—Calochortus

EIGHT VARIETIES, OUR SELECTION,  
ALL LABELED, SIX OF EACH  
VARIETY, 48 BULBS IN ALL, \$6.25

These lily-like flowers will make the gay-  
est kind of a display in your early  
spring garden.

## SELECTION No. 8—Erythronium

These lovely Dogs Tooth Violets will  
prove to be gems in your woodland  
garden. Very hardy.

EIGHT EACH OF SIX DIFFERENT  
VARIETIES, ALL LABELED,  
48 BULBS IN ALL, \$6.25

**ORDER BLANK**

**DO NOT WRITE HERE**  
**Order No.**

# **ROMAINE B. WARE**

*Successor to*

# **JULIA E. CLARK**

**Route One, Box 328 — CANBY, OREGON**

Ack'd \_\_\_\_\_  
Booked \_\_\_\_\_  
Checked \_\_\_\_\_

M.O. Enclosed for \_\_\_\_\_

Check Enclosed for \_\_\_\_\_

Ship to \_\_\_\_\_  
Please PRINT Name and Address Plainly

Street and No. \_\_\_\_\_

Postoffice \_\_\_\_\_ Zone \_\_\_\_\_ State \_\_\_\_\_

Express office if  
Different from P.O. \_\_\_\_\_

Party Placing Order  
Name \_\_\_\_\_ Address \_\_\_\_\_

Every order guaranteed to be in first class condition when shipped and to reach you safely and undamaged. All bulbs are guaranteed to bloom if given reasonable care. Of course, you would not expect us to replace bulbs lost due to weather conditions, carelessness, neglect or inexperience. Complaints of material damaged in transit must be made at once.

We acknowledge receipt of your order and remittance and ship at digging time.  
**PLACE YOUR ORDER EARLY SO WE CAN RESERVE THE BULBS NOW.**

QUANTITY	CATALOG NUMBER	NAME	PRICE	TOTAL PRICE
Amount Carried Forward \$				

May we substitute equally good or more costly varieties when those you select are sold out? Yes..... No.....

Postage paid on all orders in U. S. of \$5.00 or more. Add 50c for less than \$5.00—otherwise we send postage collect.

***Please Use a Separate Sheet for Correspondence***

QUANTITY	CATALOG NUMBER	NAME	PRICE	TOTAL PRICE
		ORDER—Continued	Brought Forward \$	
		AMOUNT OF ORDER \$		

**Please Send a Copy of Your Catalog to:**

Name 

---

Please Print Name and Address

Address 

---

## The SUNSET LILY

**PARDALINUM Giganteum-596**—The Sunset Lily, Red Giant or Chinook Lily. A truly magnificent lily worth growing for its foliage alone. It grows to eight feet tall, requires no staking. Each stem bears from 12 to 30 brilliant sunset-red blooms with base of yellow marked with amber brown spots. If you want a gorgeous display plant a dozen in the background of your border. Our strain is especially fine and vigorous.

**DOZEN \$2.75, EACH 25c**

**PARDALINUM-590**—A hardy vigorous specie from our west coast. Easily satisfied as to soil, handsome and graceful. Fine for beginners with lilies. Deep orange-red shaded to crimson at tips. **Each 20c, Doz. \$2.10.**

**PARRYI-600**—An exquisite lily you will truly love. Funnel shaped with tips gracefully recurving. Pale lemon-yellow, lightly dotted brown. Sharp drainage, ample water, partial shade, lime-free soil. **Each 85c.**

**PARVUM-604**—This lily varies from orange to dark red with maroon spots. Dainty and attractive, it likes a moist, sandy soil with lots of humus. **Each 85c.**

**PETER PUGET-608**—Another of Dr. Griffith's hybrids, a distinct and attractive lily that is "different" in coloring. Flowers are fifteen or more in number, capucine yellow, overlaid with red near tips and spotted black. Doesn't that sound interesting? June blooming. **Each \$2.25.**

**PHILADELPHICUM-612**—A native eastern American species with erect cup-shaped flowers, scarlet spotted with dark maroon. Sometimes called the Wood Lily. Our stock is home grown, not collected. **Each 30c.**

**PHYLLIS COX-616**—Another of the Grace Marshall group of hybrids, all of which seem destined to a great future. Brilliant orange-red. Vigorous. **Each \$1.05.**

**POLYPHYLLUM - 620**—A beautiful species from the high Himalayan mountains. Creamy white, spotted and streaked with purple. outside greenish-yellow. Full shade, moist, well-drained humus. Rare, scarce. **Each \$4.25.**

**PRESTON'S HYBRID SEEDLINGS-624**—An interesting group of unnamed hybrids related to Grace Marshall and Lillian Cummings. You'll find them worth while. **Each 65c, Dozen \$7.10.**

**PRINCEPS, G. C. Creelman-630**—The true variety. One of the finest of the Regal x Sargentiae hybrids. Extraordinary heads with up to 30 trumpet shaped blooms, white, lemon-yellow center, shaded brownish lavender exterior. Late July. Sun or shade. Scarce. **Each \$3.10.**



THE SUNSET LILY

**PRINCEPS Creelman Hybrid Seedlings-634**—Again we offer flowering stock of these seedlings, handsome trumpet lilies similar to the true Creelman but with varying blooming season. Early July to mid-August. A truly satisfying group. **Each 55c.**

**Large, 85c.  
Extras, \$1.05.**

**PRINCEPS, Creelman x Centifolium Hybrids -650**—Another grand new strain of hybrids by Miss Beatrice Palmer, Canada. Remarkably robust lilies with huge heads of flowers, white with lemon throat. **Each \$3.10.**

**PRINCEPS, Shelbourn Hybrid-656**—An attractive, tall, slender growing lily of the Regale-Sargentiae type but late blooming. These bulbs are scarce. **Each 65c.**

**PRINCEPS, Pride of Charlotte-660**—A hardy vigorous hybrid, July blooming. White trumpet, suffused with sulphur, outside stained light purple. **Each \$2.25.**

**ROEZLII-700**—A graceful lily of the Martagon type. Golden yellow shading to red at the tips. Partial shade, moisture, good drainage, lime-free soil. July. **Each 60c.**

**ROEZLII HYBRIDS - 708**—Golden yellow to orange red. These lilies are very attractive but seldom seen. They like leaf mold soils. From Siskiyou mountains, Oregon. **Each 55c.**

**RUBELLUM-712**—A gem of a lily, rose-pink, funnel shaped, fragrant. One of very few pink lilies we have. Small stature and dainty bloom make it ideal for rock garden or front of border. We never have enough of this popular lily. Early June. **Each \$1.15.**

**RUSSETT - 720**—Deep burnt orange cup-shaped lily on three-foot stems. A brand-new lily we have not had before. Hardy, easily grown, early June. **Each \$1.25.**

## Romaine B. Ware—Lilies

**SACAJAWEA**—750—A very fine hybrid by Dr. Griffiths and named after the famous Indian guide of the Lewis and Clark expedition that was largely responsible for the Oregon Country becoming part of the United States. This lily has large reflexed blooms, deep orange-yellow with black spots. July. **Each 85c.**

**SCOTTIAE Light Form**—760—A hybrid between Willmottaie x Elegans. Bright salmon orange spotted purple. a fine lily of easy culture. July-August. **Each \$1.10.**

**SCOTTIAE Dark Form**—764—Same as above but darker. June blooming. **Each \$1.05.**

**SCEPTRE**—768—One of the famous Backhouse hybrids raised by Mrs. R. O. Backhouse in England. Light lemon yellow suffused with light fuchsia purple, deep purple spots. A beautiful lily. June-July. **Each \$4.15.**

**SPITFIRE**—784—A brilliant vase-shaped lily facing upwards. Flame scarlet with darker spots. Late June. **Each \$3.25.**

**ST. NICHOLAS**—786—A Martagon album x Hansoni hybrid with recurved flowers. Buttercup yellow with black spots; a striking lily. June. **Each \$6.00.**

**SUPERBUM**—796—Commonly known as the American Turks Cap Lily, one of our finest natives. A lovely bright orange suffused yellow with brown spots. 5 to 8 feet. Easily established in partial shade. Enjoys a moist lime-free soil with good drainage. July-August. **Each 35c.**

### The SPECIOSUM Group

**SPECIOSUM Album**—776—White spotted rose-pink.

**SPECIOSUM Rubrum**—780—White heavily spotted with pink and shading to carmine. These two lilies and **HENRYI**, called the Golden Speciosum, can well make a never-to-be-forgotten picture in your garden. Use Henryi for the background. All are hardy, vigorous and easily grown. Our stock of Speciosum is fine and healthy but never sufficient to meet the demand.

**SPECIOSUM album**—776—Each \$1.35,  
Doz. \$15.30.

**SPECIOSUM rubrum**—780—Each \$1.25,  
Doz. \$14.20.

**HENRYI**—386—Large size, Each 80c,  
Doz. \$8.85.

Special Offer for Mass Planting:

One Dozen Each No. 776, No. 780 and  
No. 386 for \$36.50 (36 bulbs).

### GROUP YOUR LILIES . . .

You will enjoy your lilies more if you group them. They take up very little room, and a dozen planted 6 to 12 inches apart in a group will give a much better effect than when planted singly.

## Lilium Regale

**REGALE**—680—Here's a lily you should plant by the dozens wherever you can find room for them. If you have a few, better plant some more. Regals are easily our most popular lily. Well do I remember the beautiful group of them in the private garden of Mr. E. H. Wilson who discovered this valuable lily in the heart of China. Their large white bell-shaped blooms with deep golden throat and pink mid-ribs are truly superb. We have a fine stock of this wonderful lily and don't forget our prices are prepaid.

Flowering size 20c, Dozen \$2.10,  
100 for \$14.20.

6 to 8 In., Each 25c, Doz. \$2.60,  
100 for \$19.00.

8 to 9 In., Each 35c, Doz. \$3.70,  
100 for \$26.80.

9 In. and Up, Each 50c, Doz. \$5.30,  
100 for \$39.60.

**T. A. HAVEMEYER**—800—This very unusual and handsome lily was named after the late head of the famous International Flower Show held in New York each spring. During the few years since its introduction, this lily has been royally acclaimed wherever lilies are grown. Semi-trumpet blooms of large size in soft buff with external band of light green on each segment. Late. Scarce. **Each \$5.25.**

**T. A. HAVEMEYER SEEDLINGS**—804—A mixture of selected seedlings varying in color and flower type between Henryi and the beautiful variety Sulphureum. A real buy considering quality and style. **Each \$1.75.**

### SELECTED HYBRIDS OF T. A. HAVEMEYER

Produced by Mr. Edgar L. Kline

This group, first put on the market by Miss Clark last year, are outstanding new varieties. Easy culture, sun or partial shade, freedom from disease, robust growth and striking colors make them extremely desirable. Stock limited. Any of the following six varieties. **Each \$25.00.**

**PAULINA KLINE**—810—Majolica yellow shading to saffron, flecked oxblood red. 5½- to 8-inch flowers. Height 6 feet.

**MABEL B. RONNA**—812—Majolica yellow stained lemon yellow. Very erect. 5-inch bloom. 8 feet..

**WILLIAM BATES**—814—Light tangerine orange shading to ivory. Recurved. 5-inch bloom. 8 feet.

**G. V. SHAW**—816—Egyptian buff shaded ivory. 5-inch blooms, slightly recurved. 5 feet.

**EDMUND L. KAGY**—818—Persimmon orange, light flecking ox-blood red. 8-inch bloom, 6 feet. Erect.

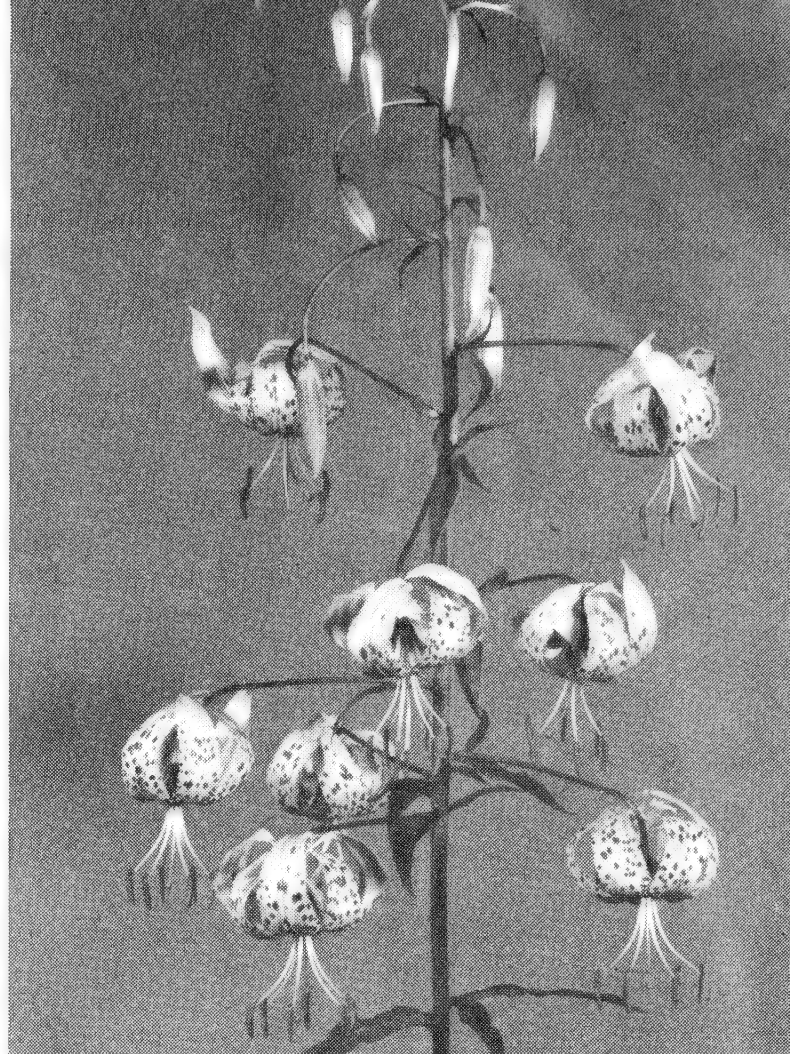
**IDA JANE CALIFF**—820—Majolica yellow ox-blood red flecked border half way to tips. 4½-inch bloom, 3 feet.



## *Lilium Shuksan*

**SHUKSAN-790**—This hybrid of Dr. Griffiths is generally considered one of his best and in the garden is highly satisfactory. Each stem carries fifteen to eighteen blooms, typically Martagon in type, irregularly reflexed, cadmium yellow, faintly flushed red near the apex which is nearly free of dots. The few dots are small and black. Altogether it is a striking and delightful lily both in the garden and for cutting, lasting a week in water. A healthy vigorous grower hard to equal. Our stocks are A-1.

Each 45c, Large 65c.



**SHUKSAN**

**SUTTON COURT-794**—Another of the famous hybrids by Mrs. R. O. Backhouse. They are healthy, vigorous and easily handled in the garden. This one is a delightful shade of yellow, spotted with purple, the yellow segments shaded pink. You will consider it a real find. Limited.

Each \$6.00.

**TENUIFOLIUM-830**—The gayest of the "little lilies". Miss Clark calls them a bright "cherry red" and surely they bring joy and gladness to our gardens in May and early June. Fine for the rock garden or foreground of your border. Height 1 to 2 feet. Again this season they can be offered at a price which allows quantity planting.

Each 15c, \$2.60 for 25.

Larger, Each 20c, \$4.00 for 25.

**TENUIFOLIUM Golden Gleam-834**—Identical to the above except in color which is a golden yellow and perfectly delightful.

Each 35c.

**TENUIFOLIUM Gold Finch-842**—A new one with canary yellow flowers and just as easy to grow. Stock limited but popular.

Each 95c.

**TENUIFOLIUM Red Star-838**—A fairly recent lily and a variation from the type. Bright red but less reflexed and with broader petals. Very attractive.

Each 45c.

**TESTACEUM-848**—The famous Nankeen Lily. Soft apricot or yellow buff, the only lily of this delightful shade. Once established it forms fine clumps and gives good bloom for years. This lily makes sub-surface growth in the fall and must be planted early. We ship early in September so please send your orders EARLY. We have never been able to meet the demand for this valuable lily.

Each \$1.75.

Large, Each \$2.15.

Extra large, Each \$3.25.

**UMBELLATUM Chief Chinook-854**—This is a very superior form of Umbellatum. Like the species it is vigorous, hardy and long lived. Chief Chinook was a seedling of Dr. Griffiths which he gave to an Indian woman to propagate. She died but others have grown the bulbs which have clear, rich orange-yellow umbels.

Each 45c.

**UMBELLATUM Incomparable-864**—Dark red with an orange tinge. All the umbellatums are showy and decorative in the garden or shrub border. Good in average soil but better with plenty of leaf mold. Incomparable is the best of the medium reds.

Each 35c.

**UMBELLATUM Mixed-868**—A color range through apricot, yellow, orange to the darkest reds. Heights vary from 1½ to 4 feet. June to July.

Each 35c, Dozen \$3.70.

**WASHINGTONIANUM Purpurem-880**—This is Oregon's beloved lily—dainty, fragrant, white bell-shaped blossoms changing to wine with age. It may take a couple of years to feel at home in your garden but you will say it is worth the waiting. Partial shade.

Each 55c, Large 85c.

**WILLMOTTIAE-872**—A very graceful lily, orange-yellow blossoms with little black dots not only beautiful in the garden but lovely for bouquets. Try it with delphinium in a brass bowl. The slender stems should be staked.

Each 30c, Large 45c.

**WILLMOTTIAE Unicolor-876**—A distinct variety of this fine lily with lighter orange-yellow flowers and few or no spots. July flowering.

Each 35c, Large 55c.

## **Lily Seed**

Many lilies grow easily from seed. We offer quite a comprehensive list later in the season with directions for sowing. A postcard will bring it. Please **PRINT** name and address.

# Delightful **LITTLE COUSINS** of the *Lilies*

Many are Natives of Oregon and California

If you love the woodlands and meadows, if you have tramped over the hills and vales of the west coast, doubtless you have seen many of these Little Cousins of the Lilies in their native heath. We love them and you will too, when you learn how easy they are to have in your own garden. As Miss Clark said in her last catalog, I wish it were possible to send you pictures of all of them in

their true colors. However, with the restrictions on paper this is impossible. They are lovely and few flowers of any kind offer such a variety of rich colors. Because of the expense of handling these little bulbs, please do not order less than three of a kind EXCEPT where the price is quoted "Each". For larger quantities than priced we will be glad to quote prices.

**BRODIAEA**—A delightful showing when naturalized in drifts under deciduous trees or shrubs. Plant about 3 inches deep and leave alone. Bloom late spring.

**Coccinea**—1050—Syn. *Brevoortia Ida Maia*, the Floral Firecracker. Dazzling crimson blooms. Loose gritty soil.

**Capitata**—1060—"California Hyacinth", clusters of lilac flowers on 1- to 2-foot stems.

**Ixiodes**—1062—Bright yellow. 8 to 12 inches.

**Lactea**—1064—White with green vein.

**Grandiflora**—1066—Bright blue. 6 to 10 inch.

**Laxa**—1068—Clear blue. 18 inches. Vigorous.

3 Bulbs any one kind, 45c.

12 of one kind, \$1.75.

3 of each kind (18 Bulbs) \$2.50.

12 of each kind (72 Bulbs) \$10.00.

**NOTHOLIRION Thompsonianum**—1230—A comparatively new bulb from northwest Himalaya. Blooms funnel shape, rose or lilac color on 2- to 3-foot stems. May flowering. Sunny, well drained spot, 3 to 4 inches deep. Needs some slight protection in late winter and early spring. 3 for \$1.25, Dozen \$4.85.

**CAMASSIA Leichlinii**—A fine hardy bulb that is all too seldom planted. They make a fine show in the border or naturalized in open moist woodland. This year we offer 3 kinds. You should have all of them. No. 1160—White. 1162—Blue and 1164—A combination of blue and white. Height of all about 2 feet.

6 Each any one color 75c—25 for \$2.90.

6 of each color (18 Bulbs) \$2.15.

100 mixed \$10.75.

**CROCUS Tommassianus, Whitewall Purple**—1150—A lovely specie variety for the rock garden or grouping in front of border.

6 Bulbs 75c, 25 for \$2.90, \$10.75 per 100.

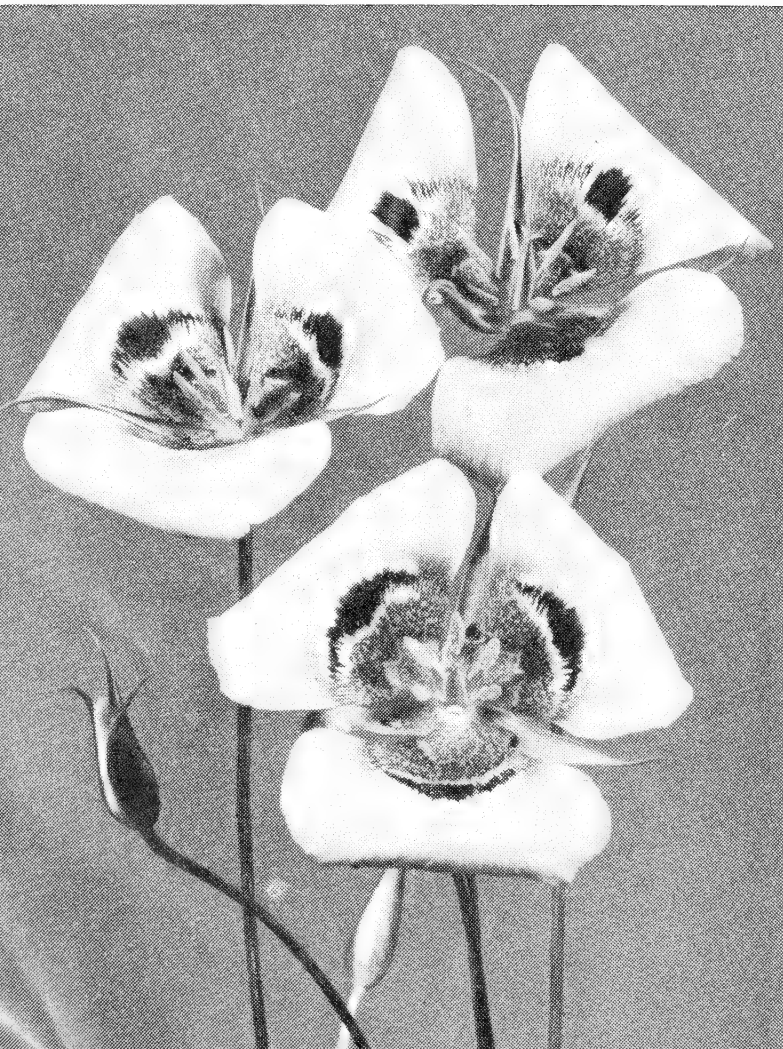
**CYCLAMEN Neopolitanum**—Hardy Cyclamen. Similar to the popular greenhouse varieties. Delightful in the shaded rock garden or front of a shady border. Thrive in open well drained soil containing plenty of leaf mold or peat. They must never want for moisture. Bloom late summer. Barely cover corms.

1170—Pink. 3 for \$1.60.

1172—White. 3 for \$3.15.

**CYCLAMEN Coum**—1176—Pink to lavender flowers blooming very early. 3 for \$3.75.

## CALOCHORTUS



## CALOCHORTUS

Mariposa Lily or Butterfly Tulips

These are the Western American Tulips and though they are quite different from ordinary tulips they are most attractive. Blooms are white or brightly colored, some very brilliant, often several on a stem. They like open woodland or the shade of deciduous trees or shrubs, loose well drained soil with plenty of leaf mold. Plant about 3 inches deep in scattered clumps.

**Albus**—1100—The Pearl Calochortus, pure white, 1 to 2 feet tall.

**Amabilis**—1104—Same as Albus; clear yellow.

**Amoenus**—1108—Like above; rose colored.

**Citrinus**—1112—Lemon yellow, brown spots.

**Lilacinus**—1124—Lilac.

**Venustus purpureus**—1130—Dark lilac.

**Venustus roseus**—1134—Lilac spotted rose.

**Splendens**—1138—Bright lilac.

3 Bulbs any one kind 45c, Doz., one kind \$1.65.

3 Each of all 8 varieties (24 Bulbs) \$3.35.

12 Each of all 8 varieties (96 Bulbs) \$12.50.

**CALOCHORTUS Clavatus**—1116—A huge flowered Mariposa, rich yellow. 4- to 6-inch blooms. 3 for 75c, Doz. \$2.60, 25 for \$5.00.

## ERYTHRONIUM

### Trout Lily or Dog's Tooth Violet

Woodland plants with lovely lily-like blooms in delicate pastel tones. Very hardy. They enjoy a loose, gritty soil with PLENTY of leaf mold and considerable shade. Be sure they never want for moisture. An ideal bulb for naturalizing.

**Albidum**-1188-White, sometimes flushed pale blue.

**Americanum**-1186-Large pinkish-yellow.

**Californicum**-1180-White, chrome yellow center.

**Giganteum**-1184-Bright butter-cup yellow.

**Hendersonii**-1182-Light purple, center deep maroon; very striking.

**Tuolumnensis**-1192-Golden yellow, quite distinct, forms large clumps by off-setting.

3 Bulbs any one kind 45c, Doz. one kind \$1.65.

3 Each of 6 kinds (18 Bulbs) \$3.40.

12 Each of all 6 kinds (72 Bulbs) \$9.40.

We have a limited quantity of Erythronium Tuolumnensis in the large size.

3 for 75c, \$2.60 per Doz., 25 for \$5.40.

## FRITILLARIA

Another woodland bulb with drooping or nodding flowers often resembling small lilies. Lovely for naturalizing or the rock garden where they may be undisturbed for many years.

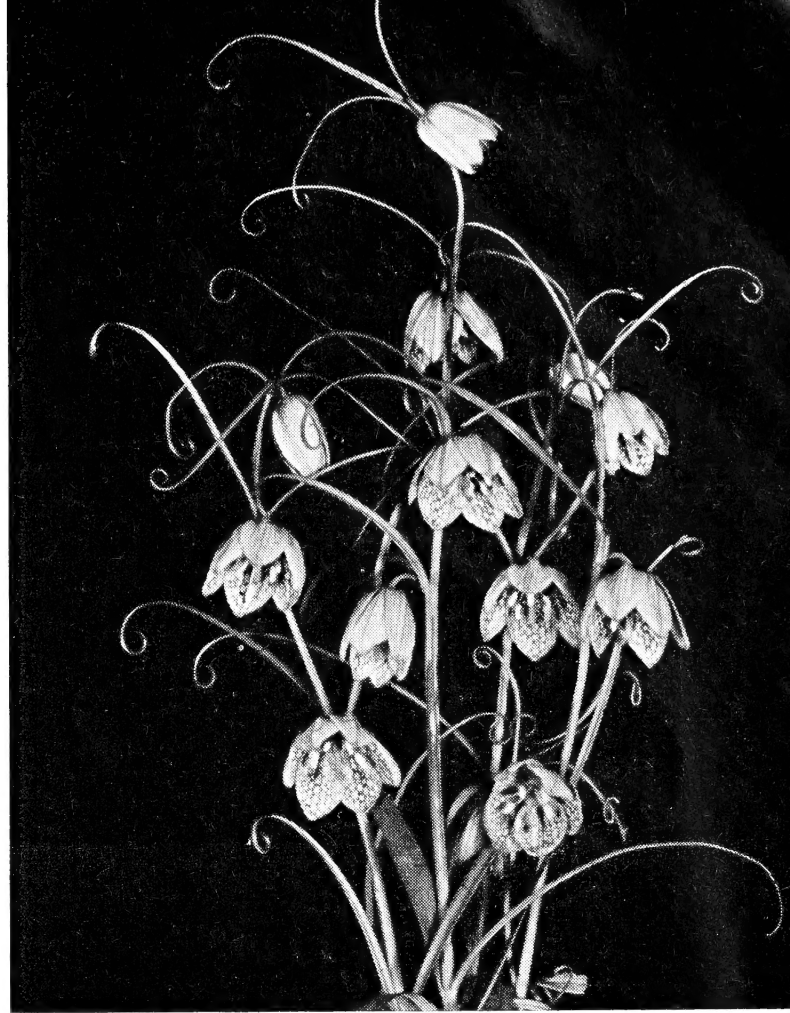
**Pallidiflora**-1208-Large pale yellow flowers, bell-shaped, 8- to 12-inch stems.

3 Bulbs \$1.25, Dozen \$4.75.

**Ruthenica**-1210-Purple, bell-shaped, very hardy. 3 bulbs \$1.85, Dozen \$7.25.

**Thunbergii**-1204-A graceful, distinct species, creamy white, veined green with as many as ten blooms to a plant. Partial shade. 1½-2 feet.

3 Bulbs 45c, Dozen \$1.45, 25 for \$2.85.



FRITILLARIA

## CHOICE CAMELLIAS

The choicest varieties of this grand shrub have long been grown in this part of Oregon. They do especially well here and though in the east and north they are not hardy outside, if you live where they can be grown or have a greenhouse, you will find these choice kinds we list to be most desirable. All are grafted plants on three-year roots and should make fine growth. Prices are quoted for 12 to 24-inch plants, postpaid.

**ECSTACY**-1500-A fine clear pink with 4-inch blooms, very lovely. Each \$8.00.

**GLORY de NANTHES**-1512-A large semi-double, bright red with golden stamens. Each \$10.00.

**GRANDE FLORA ROSEA**-1518-Extremely large, semi-double, salmonish pink. Each \$11.50.

**LOTUS**-1521-A rare single white, golden stamens, 6-inch blooms. Each \$14.00.

**MRS. WILLIAM THOMPSON**-1525-A very large, semi-double, white with faint blush and golden stamens. Lovely and rare. Each \$11.00.

**PURITY**-1530-A double white of good size, a few golden stamens when fully open. Each \$5.00.

**STARDUST**-1533-Double peony type, dark pink, 4-inch blooms, beautiful foliage. Each \$8.50.

**VICTOR EMANUEL**-1536-Huge peony form, deep red, rare and late blooming. Each \$15.00.

*Romaine B. Ware—Bulbs*

**GALTONIA Candicans, Summer Hyacinth**-1240-A lovely flower for your July-August border among the lilies. Pure white, bell-shaped flowers on 2- to 5-foot stems, delightful against dark foliage. 6 in. deep, sun or partial shade, rich moist soil.

3 bulbs for 50c, Dozen \$1.90.

Extra large, 3 for \$1.00, Dozen \$3.80.

**IXIOLIRION Ledebourii**-1260-A good blue for the May border. Fine for cutting. 1 foot tall. Plant fall, 3 to 4 inches deep, sunny, well drained spot. 6 for \$1.00.

**IRIS Reticulata**-1250-A "must" for the early garden. Deep purple with a golden blotch. Fragrant. 6-inch stems. 3 inches deep.

3 Bulbs 80c, Dozen \$3.00.

## SCILLA — Spanish Bluebells

**SCILLA Campanulata:**

**Alba Maxima**-1270-Large white..

**Rose Queen**-1274-Pink.

**Excelsior**-1278-Blue.

Any of the above:

\$1.40 a Dozen, 25 of one kind \$2.70.

Mixture of the above, white, pink and blue-1282-

\$1.35 Dozen, 25 for \$2.65.

**SCILLA Siberica**-1286-Deep blue, nodding.

Dozen \$1.40, 25 for \$2.70.

**SCILLA Spring Beauty**-1290-A lovely shade of blue, vigorous. Limited stock.

Dozen \$1.55, 25 for \$3.00.

## MATILJA POPPY

"ja" pronounced "ha"

A gorgeous plant in full bloom, 5 to 8 feet tall with 6-inch poppy-like blooms having golden centers. An established plant produces hundreds of blooms from midsummer till frost. Lovely for cutting, lasting a week if water is changed daily. A hardy perennial but should be well mulched in winter north of Philadelphia. Fall shipping only.

Each, postpaid, \$1.50.

3 Plants, postpaid, \$3.25.

If ordered with other bulbs in the amount of \$5.00 or more. Each \$1.10, 3 for \$2.35.



MATILJA POPPY

## HEMEROCALLIS *Day Lilies*

These not too distant relatives of the lilies are valuable in the garden not only for their generous and pleasing bloom but also for their graceful masses of foliage. Succeeding well in both full sun and partial shade, they are fitting companions for numerous lilies. Try grouping them with white *Lilium Formosanum* intermediate or the even taller *Lilium Centifolium*. Countless delightful combinations are possible. Our stock of *Hemerocallis*, grown here in the ideal climate of the Willamette Valley, is exceptionally vigorous.

### HEMEROCALLIS Hyperion—1470

This is an outstanding hybrid with fine citron-yellow flowers produced in great profusion on 3½-foot stems. Hyperion is one of the finest varieties to be had at the price and we consider ourselves fortunate to have a fairly ample stock. The foliage masses are attractive in the border and its long season of bloom in July and August add to its popularity. Perfectly hardy in sun or shade, wet or dry locations. Each 65c, 3 for \$1.75, Dozen \$6.40.

**APRICOT**—1425—Light apricot-orange. Early June. Semi-dwarf, about 2½ feet.

**DR. REGEL**—1428—Handsome orange-yellow. Early May and June. Dwarf 1½ feet. Very fragrant.

**GEO. YELD**—1432—Lovely, buff, apricot and terra-cotta blended. August.

**J. W. CRAWFORD**—1436—Bright yellow with apricot tints. 4 feet. June-July. Any of the above four: 3 for \$1.00, Dozen \$3.50.

**RAJAH**—1464—Delicate orange, veined red with garnet brown eye. 3½ feet. June-July. Each \$1.00, 3 for \$2.50, Dozen \$10.00.

**BAGDAD**—1454—Rich coppery brown and red over orange. 4 feet. June. Each 65c, 3 for \$1.75, Dozen \$6.40.

### HEMEROCALLIS *Fluva Rosea*—1460

A wild species. Beautiful rose-pink on a graceful 3½-foot stalk. June-July. We have a fine stock of this.

Each \$2.50, 3 for \$6.50, Dozen \$24.00.

### HEMEROCALLIS Sonny—1468

A charming variety, firm textured, recurving light yellow. 3 feet. July-August.

Each \$1.50, 3 for \$4.00, Dozen \$14.00.

**BAY STATE**—1438—Glistening deep yellow. June.

**J. R. MANN**—1442—Frosted apricot buff. July and August. 3½ feet.

**LEMONA**—1446—Delicate pale lemon-yellow. June-July. Very large, like an oriental iris.

**MRS. W. H. WYMAN**—1450—A lovely pale glistening lemon-yellow. Late August. 3½ feet.

Any of the above four:

3 for \$1.25, Dozen \$4.00.

## TIGRIDIA BULBS

With the advent of separate colors in this brilliant bulbous flower from Mexico you will find it worthy of a hearty welcome in your garden. We are happy to offer you large bulbs which should give you bloom from early August until frost.

**White**—1550—Delightfully airy blooms, lily-like in form. Some brilliantly spotted.

**Yellow**—1552—A very rich yellow.

**Rose**—1554—Lovely color without purple tone.

Any of above (order by color and number):

6 for 85c, Dozen \$1.50, 100 for \$10.90.

## DELPHINIUM SEED

### Pacific Hybrid Strain

This seed is from the choicest selection of Pacific Hybrid stock. I've never seen as good varieties anywhere and recommend it without reservation. All shades from the darkest to light blues, mauves, pinks and white. Very tall branching plants with huge flowers. No. 1490—Packet \$1.00, 3 for \$2.50. Postpaid.

## SPECIE TULIPS

These choice and interesting tulips are steadily gaining in popularity as their charm and beauty become appreciated. They are not big and tall like the ordinary tulips but most of them are dwarf to medium in height. Their blossoms, however, are delightfully different, many of them very brilliant and all interesting. You will like them, I'm sure.

**T. Acuminate**-1300-Either yellow or pink. Easy.

**Hageri**-1312-Bronze scarlet. Striped green on the outside.

**Praestens** - 1318 - Brilliant capsicum red. Tall.

**Saxatilis**-1320-Lilac with yellow base.

**Turkestanica** - 1324 - Small star-shaped, white. Several on a stem.

**Whittalli**-1326-Bright orange, olive base.

Any of the above six varieties:

3 bulbs of one kind \$1.00.

A Dozen of one kind \$3.80.

3 Each of all six kinds (18 Bulbs) \$5.60.

6 Each of all six kinds (36 Bulbs) \$11.00.

**T. Australis**-1302-Yellow, reddish outside.

**Clusiana**-1304-Outer petals cherry red, creamy white inside, violet base. Very choice.

**Eichlerii**-1306-Crimson scarlet, yellow and black center.

**Marjoletti**-1316-Light yellow, edges red.

**Sylvestris**-1320-Rich golden yellow, fragrant.

3 Each one kind 75c, Dozen of one kind \$2.80.

3 Each of 5 kinds above (15 Bulbs) \$3.60.

6 each of 5 kinds above (30 Bulbs) \$7.00.

## PANSY SEED

Oregon has become world famous for fine Pansy seed and we feel most fortunate to be able to offer what we believe to be the very best. Too, you can now buy your Pansy seed in separate colors. The seed we offer is a most carefully selected strain from thoroughly rogued plants. I have personally inspected the seed beds and can thoroughly recommend this seed as the best. The stocks of this 1st quality seed are naturally limited so order early.

**CORONATION GOLD**-1480-The best pure yellow from a reselected lot of huge Swiss Pansies. Try them as a ground cover beneath red or copper toned Azaleas; among blue Scillas or Hyacinths. Lovely among red or white Tulips and other spring bulbs.

**IMPROVED FIREBEACON**-1481-This is a coppery-red Swiss Pansy-the red of Wallflower rather than a purple red-and often has a touch of orange. The blooms are huge and striking. Delightful with any of the yellow flowered bulbs or shrubs.

**MONT BLANC**-1482-A truly wonderful pure white of immense proportions. You will like it under any of the spring bulbs or shrubs.

**ULLSWATER**-1483-A deep ultramarine blue Swiss Pansy. The finest I have ever seen. Beneath yellow flowered Daffodils or Tulips, massed below yellow Azaleas, the effect is stunning.

Any of above (order by name and number):  
One packet \$1.00, 3 Packets \$2.50. Postpaid.

**T. Fosteriana**-1308-Very large intense crimson.

**Fosteriana Red Emperor** - 1310 - Brilliant scarlet, very large and early.

**Kolpakowskiana**-1314-Yellow, often red or purple outside.

**Tarda (Dasystemon)** - 1322 - Small white and yellow, several to a stem.

Any one of 4 kinds above Each 75c, Doz. \$8.75.

3 Each of above 4 kinds (12 Bulbs) \$8.85.

6 Each of above 4 kinds (24 Bulbs) \$17.00.

## NEW DAFFODILS

Spring without Daffodils would not be spring. Doubtless you have many in your garden now but here is opportunity to add a few which will bring forth the "Ohs" and "Ahs" from your flower-loving friends. We hope next year to be able to offer a wide selection of these wonderful bulbs. Oregon grows the world's finest and you can have them and enjoy flowers that are far superior to the ordinary. They are so long lived that, really, they are a garden investment. Remember, order early, bulbs are scarce.

**WHITELEY GEM**-1600-A Gold Medal winner, London. A red-cup incomparabilis, deep golden yellow perianth and a bright orange, finely fluted cup. Early, two weeks ahead of other red-cups, thus greatly extending the season. Tall. Huge double nose bulbs.

Each \$2.35.

**SHERMAN**-1625-An incomparabilis bi-color with bold broad-petaled overlapping perianth of creamy-white, and heavily frilled cup of deep orange-yellow, conspicuous apricot anthers. Buds hang down but flowers stand up well and the contrast is charming. A late bloomer that will add interest near the end of the season. Double nose bulbs.

Each \$1.85.

**BETSY PENN**-1630-A giant Leedsii of the most lovely form and texture, broad overlapping pure white perianth of wax-like substance, crown light yellow, developing to ivory, shallow and fluted. This makes a gorgeous clumps. Top size.

Each \$3.20.

**ROYAL SOVEREIGN**-1640-A valuable member of the Twink group of semi-doubles, graceful and charming. Not only a delight in the border but a real show flower. Creamy-white interspersed with crinkled and frilled petals of primrose yellow. Double-nose.

Each 75c.

**LANARTH**-1642-A beautiful and unique Jonquil hybrid, one of the finest in this class. If you want a prize winner for exhibition try this. Too, in the border, it is superb. Deep golden over-lapping perianth with shallow expanded cup, old gold flushed orange. Top size bulbs.

Each \$3.20.

**BULBOCODIUM CONSPICUUS** - 1670 - A jewel for rock garden or border. This yellow Hoop Petticoat is only 6 inches high, golden yellow. February to early March. It likes a sandy peat soil with plenty of moisture while in growth. Keep dry in summer, no manure.

6 Bulbs 75c, Dozen \$1.45.

**FORMOSANUM**  
White, emerald-green throat  
(See Page 6)



## *A Few General Rules for Lily Culture*

Plant bulbs promptly upon arrival—they resent being moved and deteriorate when out of the ground too long. For this reason we do not hold bulbs in cold storage but ship immediately they are dug.

Best location, southeast exposure, in warm sunny or half shady spot. They like mellow soil with plenty of old leaf mold, finely pulverized peat and always must be **WELL DRAINED**. They cannot stand wet soggy, soils. Protect from late frosts, extreme heat and drouth.

Best fertilizer is bonemeal and potash—wood ashes are fine when thoroughly mixed with the soil. Dust bulbs with powdered sulphur to keep insects from attacking them until well established.

**DEPTH:** General rule—Soil above bulb about  $1\frac{1}{2}$  to 2 times the size of the bulb. That is, a bulb 2 inches high calls for 3 to 4 inches of soil above the bulb. Candidum, Giganteum Himalacum and Cordatum are exceptions. Candidum, cover with 2 inches of soil, the other two almost at the surface.

Once planted, **LEAVE THEM ALONE**. Do not move lilies unless absolutely necessary. Keep moist during the growing period. Many lilies produce stem roots above the bulb to within an inch of the surface spreading out to two feet in diameter. Cultivate with ex-

treme care, if at all. It is better to mulch with leaf mold or peat to keep cool and moist. If you use peat, mix half and half with fine loam.

In clay soils dig hole 24 inches in diameter and as deep, put in 6 inches of crushed gravel, broken flower pots or such—then chopped sod, face down, for six inches. Now, six inches of good loam top soil mixed with compost and sand. Add several handfuls of bonemeal and some wood ashes. Firm this and wet down thoroughly. Then add plain loam, good mellow soil and wet down well. Plant bulb at the proper depth with a handful of sharp sand directly below it to make doubly sure of drainage. For scaly bulbs, hold scales together. **THEN LEAVE THEM ALONE.**

Some few varieties do not make growth above the ground till the second season so place a small stake at planting time to locate the planting and avoid digging them up. Go easy on cutting until bulbs are well established. The stems help nourish the bulb for next year. Remove wilted bloom and do not allow seed to form as it saps strength for the growing bulb.

Candidum makes growth in the fall, so plant early. In the spring remove the fall leaf growth. Testaceum makes growth in the fall below the surface and must go in early.

### **ROMAINE B. WARE — LILIES**

Successor to  
**JULIA E. CLARK**  
Route 1, Box 328  
CANBY, OREGON

Sec. 435½, P. L. & R.  
U. S. POSTAGE  
**PAID**  
PERMIT NO. 10  
Canby, Oregon

POSTMASTER: If addressee has moved, advise new address on Form 3547 and amount of forwarding postage needed.

RETURN POSTAGE GUARANTEED